

**Westcombe Dairy,
Somerset**

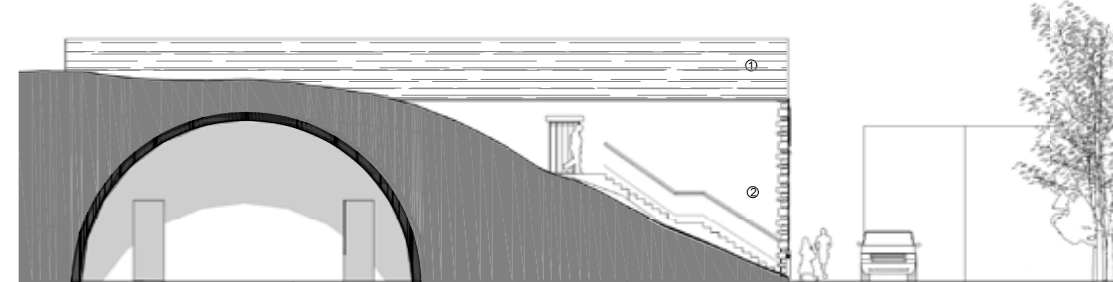
670m² cheese cave with processing area and offices due on site in 2008.

The cave is built from 12 three part pre-cast concrete rings buried beneath an existing hill with processing and office accommodation in a linking building to the front.

Geo-thermal temperature of hill keeps cave at constant temperature.

Diverted natural spring running in 'canals' in the floor maintains constant humidity.

Natural humidifier and air-con make the cave extremely energy efficient.



Mark Orme Architects Ltd

www.markormearchitects.co.uk